

NARANGBA STATE SCHOOL

An Independent Public School



Prospectus 2021

CONTENTS

1.	From the Principal	3
2.	Our Vision	4
3.	Important Information <i>Administration, Staff, Facilities, Queensland term dates, Student free days, Public holidays</i>	5
4.	Arrival at School <i>Leaving the school grounds, Parking / safety, School times, Transport options</i>	7
5.	Curriculum Information <i>Arts council, Assessing and reporting student progress, Early years curriculum, Excursions, Homework, Key learning areas, Resource centre, Sport, Technology</i>	8
6.	Student Support Information <i>Chaplaincy, Guidance officer, Support Teachers: Literacy and Numeracy, Special education program, Speech Language Pathologist</i>	11
7.	Policy and Procedures <i>Absenteeism, Behaviour of students, Book packs, Complaints procedure, Change of details, Emergency contacts Food and allergies, Leaving the grounds early, Lost property, Medication, Mobile phones, Money collection, Newsletter, Parades, Parent teacher interviews, School captains, Sports houses, Student council, Sun safe, Transfer forms, Uniform</i>	13
8.	Parents and Community Involvement <i>Banking, Outside school hours care, Partnership is essential, Parent volunteers, Parental responsibility, Parents and citizens association, School watch, Tuckshop, Uniform shop</i>	17
9.	The Narangba School Song	19

1. From the Principal

Welcome to our school community. Narangba State School is an Independent Public School (IPS) that provides students with rich and diverse academic, cultural and sporting opportunities. We aim to work in partnership with parents to support every student to achieve their full potential.



Pamela O'Loughlin

Our School Vision provides us with a clear direction.

Narangba State School is an Independent Public School striving for excellence. We do this:

- *in a calm, supportive learning community*
- *focusing on quality individual student outcomes*
- *with high expectations for all*

Our Motto: *"For life we learn"*

Our school is nestled within a supportive community with shared values and a strong sense of ownership and responsibility towards its members. In a rapidly changing world where students have ready access to global information, this community provides a safe and nurturing environment for healthy, growing children.

We recognise the importance of achieving high levels of competence in literacy and numeracy and we strive for continual improvement in student performance in these areas. Our students are immersed in a technology-rich environment where information and communication technology (ICT) is used to enhance learning. We value 'The Arts' and 'Sport' and provide opportunities for our students in the middle to upper grades to excel in these areas.

Narangba State School values parental and community involvement. We believe strong partnerships are critical for optimum student learning. Our school offers frequent opportunities for parents to join our team and become support tutors and mentors for the students. Through a variety of workshops parents have the opportunity to learn more about the activities in which their students are involved.

Our Parents and Citizens Association (P&C) plays an active role in the direction and progress of our school. The group meets monthly on the second Tuesday of each month and is a forum through which to participate in areas of school decision making.

We also conduct a 'Parent Forum' each school term where parent representatives from every classroom meet with the administration team and participate in discussions about school policy and direction.

Narangba School Council also meets at least once per Term to discuss School Strategic Direction and to endorse school documents such as the budget and Annual Improvement Plan. The School Council consists of the School principal, P&C President and staff and community representatives.

I look forward to developing strong partnerships with you and your children to ensure a strong educational foundation for your child's future development and achievement.

Regards
Pamela O'Loughlin

2. Our Vision

Our school is grounded in community and we hold the 'You Can Do It' values of:

Resilience: having a positive attitude, being in control of ourselves and accepting the consequences of our actions

Persistence: refusing to give up or be defeated; always trying our best and remembering if we keep trying... 'You Can Do It'

Getting Along: respecting every member of our school community and their right to be included, to succeed and to have their successes celebrated

Organisation: setting a goal to do your best school work, listening carefully, working together with courtesy, helping each other, solving problems and always being tolerant of one another

Confidence: building self-confidence and self-control to achieve success and always treating others with dignity and respect

Each of these values contributes to the overarching commitment to integrity. A successful Narangba State School student is:

- Confident and motivated for a life time of learning
- Considerate and respectful of others
- An optimistic and independent critical thinker
- A positive contributor to school and community
- Able to celebrate the successes of self and others

3. Important information

3.1 Administration

The Administration team at Narangba State School consists of the Principal, two Deputy Principals, Head of Curriculum (HOC), Head of Special Education Services (HOSES), Business Manager (BM) and Administration Officers. Entry to the office is from School Road.

The office is open between the hours of **8:15 am and 3:30 pm**.

The Principal's role is that of the executive officer who oversees all aspects of the school management, in administration, leadership and through direct involvement of the education program. The Deputy Principals manage school operations and may have individual contact with students to support their learning. The HOC leads curriculum development and coordination across P-6 and the HOSES supervises the daily operations in the Special Education Unit (referred to across the school as SEP). The BM oversees school finance procedures and works with the Principal to manage school facilities. All officers are willing to discuss school initiatives with community members. Please make appointments if possible.

Our office staff provide support to the Principal and Deputy Principals and are responsible for reception, clerical, money collection, book-keeping and other organisational tasks. Your patience is appreciated during busy periods in the office.

3.2 Staff

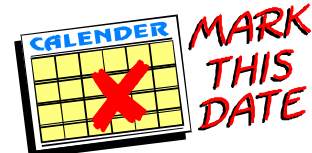
Teaching staff at Narangba State School consists of a talented and dedicated group of classroom teachers. Additionally, there are specialist teachers in Music, Physical Education, LOTE (Japanese), STEM (Science, Technology, Engineering and Mathematics) as well as a Guidance Officer, Support Teachers: Literacy and Numeracy and Inclusion teachers (SEP). An Instrumental Music teacher attends the school several days a week to coordinate our instrumental music program.

Teachers at the school work closely with a highly trained and committed team of Teacher Aides who support student learning in the classroom, Resource Centre, SEP and administration. The school is maintained by our dedicated cleaning staff and Schools Officer.

3.4 Facilities

Narangba State School is situated in the Department of Education and Training's North Coast Region, serves the local Narangba community with an enrolment of approximately 700 students.

The school facilities consist of permanent teaching blocks, modular buildings, Student Support Centre, Resource Centre, Multi-Purpose Hall, Administration building and two amenities blocks. Recreational facilities include four large adventure playgrounds, two all-weather play areas, environmental areas, two ovals, cricket nets and a multi-purpose court.



3.5 2021 Key school events

Term 1

Wednesday 27	School resumes
February	Sounds to Letters parent workshops
March	Parent/Teacher Interviews
March	Swimming

Term 2

April	School Cross Country (Years 4 – 6)
April	Fun Run (Prep – Year 3)
May	Year 3, 5 NAPLAN testing
June	Senior Athletics carnival (Years 4 – 6)
June	Written reports to parents

Term 3

August	Junior Athletics carnival (Prep – Year 3)
September	Year 3, 5 NAPLAN reports sent home
September	Junior Narangba Celebrates (Prep – Year 3)

Term 4

October	Prep 2022 Open Day
December	Written Reports to Parents
December	Awards Day
December	Year 6 Farewell
December	Senior Narangba Celebrates (Years 4 – 6)

3.6 2021 Queensland Term Dates

Term 1 Wednesday 27 January – Thursday 1 April

Term 2 Monday 19 April – Friday 25 June

Term 3 Monday 12 July – Friday 17 September

Term 4 Tuesday 5 October – Friday 10 December

3.6 2021 Student Free Days

Term 1 Thursday 21 January, Friday 22 January and Monday 25 January

3.6 2021 Public Holidays

Australia Day	Tuesday 26 January
Good Friday	Friday 2 April
Easter Monday	Monday 5 April
ANZAC Day holiday	Monday 26 April
Labour Day	Monday 3 May
Queen's Birthday	Monday 4 October

In addition to the public holidays above, Monday 9 August is gazetted as the Exhibition Holiday in Moreton Bay Region.

4. Arrival and departure

4.1 Daily routine

Instruction at Narangba State School begins at 8:55 am. It is suggested that students arrive in time to get their materials ready for the school day. For this reason a bell rings at 8:50 am.

When students arrive at school, Prep to Year 2 go to the Covered Area near the Year 1 building and Years 3 to 6 go to the Tuckshop Covered Area. They are to remain seated until the 8:50 am bell. Playgrounds and play equipment are not to be used before 8:50 am, even with parental supervision.

There is limited supervision before school so it is recommended that students arrive as close to the 8:50 am bell as possible.

Outside School Hours Care is provided from 6:00 am until 6:00 pm.

4.2 Leaving the school grounds

Once at school, students are not permitted to leave the school grounds unless prior written arrangements have been made with their classroom teacher or the Principal.

4.3 Parking / safety

All visitors to the school are asked to obey the traffic signs around the streets adjacent to the school. The correct use of the two minute drop-off zone is particularly important.

4.4 School times

First Bell	8:50 am
School starts	8:55 am
Eating	11:00 am – 11:15 am
First Break	11:15 am – 11:45 am
Second Break	1:15 pm – 1:45 pm
Eating	1:45 pm – 1:55 pm
School finishes	3:00 pm

4.4 Transport options

Students travel to school by private transport, on foot, on bicycles, on buses and some by rail.

Bus: Contact Kangaroo Bus Lines on 5498 6362.

Rail: School is within walking distance of the Narangba train station.

Bikes: A bike enclosure is located near the School Officer's shed near the bottom oval. This enclosure is locked just after 9:00 am and unlocked just before 3:00 pm.

Due to safety factors and the terrain surrounding the school, skateboards and roller blades these are not acceptable modes of transport to school and are not allowed in the school grounds.

5. Curriculum information

5.1 Assessment and reporting student progress

Teachers gather assessment data on students by a variety of means throughout the year. Our formal reporting timelines is as follows:

Term 1 and 3	Parent-Teacher conferences
Term 2 and 4	Written School Report
Term 3	Year 3 and Year 5 NAPLAN results

Parents are encouraged to arrange to meet with teachers to discuss their child's progress at any time during the year.

5.2 Early years

Early Years Literacy revolves around our very successful reading program, the core of which is the phonological awareness program 'Sounds to Letters'. We have had outstanding success with 'Sounds to Letters', ensuring that all students leave the Early Years reading at an appropriate level as demonstrated by our continual achievement above the National Benchmarks in Year 3 and 5. We believe that these Early Years are crucial in establishing a love of learning in our students and growing capable, confident learners. Students learn through a combination of teacher directed activities, small group and independent work. There are some play based activities that incorporate all components of our curriculum.

5.3 Excursions

Class excursions are planned to link to the curriculum unit and are limited in number. Costs are kept to a minimum to ensure all students have the opportunity to participate. Parents are given as much notice as possible and parent permission is always required. A detailed annual schedule is provided to parents at the beginning of the year.

5.4 Homework

Homework contributes to the development of student responsibility as they grow into higher grade levels. It is never meant to be an arduous task but rather an opportunity for students to revise and consolidate their learning. Homework also offers parents the opportunity to engage with students in their learning and provide support and encouragement. The majority of classes operate on a weekly homework sheet although some have a graduated system of collection. Some classes hand all work in on one day; others mark it progressively through the week.

- Prep students will be set homework on a needs/interest basis. No more than 30 mins per week.
- Years 1-3: Could be up to but generally not more than 1 hour per week.
- Years 4-6: Could be up to but generally not more than 2-3 hours per week.

All students are expected to read every night and if you have the time to listen to your child's reading and to read to them, this will be time very well spent. If you have questions about homework, please ask your child's teacher.

5.5 Curriculum

Narangba State School offers a broad-based curriculum which includes English, Mathematics, Science, Humanities and Social Sciences (History, Geography, Economics and Business, Civics and Citizenship), The Arts, Technologies and Health and Physical Education. This is achieved through implementation of the Australian Curriculum and our own school based programs. Teachers work together to plan units of work that are based on the intended curriculum and are also responsive to student needs. Learning goals are used to focus student attention on their own learning and progress towards success.

Specialist Music and HPE lessons are offered to all year levels and students in Years 4-6 participate in LOTE (Japanese) lessons.

Many opportunities are available in the school for students to become involved in extension activities or pursue special interests.

- Students may be invited to participate in cluster projects which involve other schools in our district, online projects and competitions.
- Our school Band and Choirs perform at a number of school and community functions each year. Students in Years 4, 5 and 6 may choose to participate in a selection process in order to enter our Instrumental Music program. Instrumental Music lessons (Brass, Woodwind and Percussion) occur weekly. Students in Years 2-6 are encouraged to join one of our school choirs.
- Other activities in which students at the school are involved include sport (interschool or regional), excursions, academic competitions, school camps (from Year 5) and other performances.

5.6 Resource Centre

Resources at Narangba State School are housed in our Resource Centre. An extensive collection of Junior Fiction, Fiction and Non-fiction print resources are available for borrowing as well as electronic resources which can be accessed through the computer lab. This includes a subscription to World Book online encyclopaedia. Other classroom resources are accessed by teachers and students for use at school and include audio-visual resources, Maths and Science equipment and group reading materials.

The Resource Centre incorporates three teaching areas - a teaching space with worktables and a huge touch screen monitor, a story-telling area and a computer lab which can cater for whole class use. Our friendly staff members work with teachers, classes, small groups of students and individuals to support the curriculum.

Classes generally borrow on a weekly basis and students from Years 4-6 are welcome to borrow during lunch breaks. Students are also welcome to visit the library with an adult before or after school. Activities available in the library include: computer lab and Computer Club, XBOX Kinect, Drawing Club and games. Rosters are created at lunch breaks to ensure all students have access to the Resource Centre.

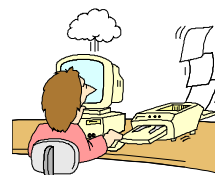
Book Week is an important event in the Resource Centre calendar as it highlights the importance of literature in our lives and focuses attention on Australian authors and illustrators. Other events organised through the Resource Centre include Book Fairs, author visits and the National Simultaneous Story time event.

5.7 Sport

Students are offered a wide range of sporting opportunities throughout the year, including interschool sport in the senior school. All students have the opportunity to participate in the school sports days with the senior carnival being held in Term 2 and junior in Term 3. Additionally, students have opportunities to compete at District, Regional and State level in a variety of sports through a school based program of trials.

5.8 Information and Communication Technologies (ICT)

At Narangba State School ICT is integrated across the curriculum in all year levels. With access to interactive panels in all classrooms. Students use computer and other technologies as an integral part of their learning.



There is a lab of 28 computers in the Resource Centre, as well as an air-conditioned lab in C Block with 25 computers.

Narangba State School currently uses Windows 10 as its operating system and Microsoft Office 2010 for applications. We have a local area network (LAN) linking all curriculum computers in the school as well as internet access from each computer in every room. We have network printers in each teaching block and in the Resource Centre.

Teachers and other staff are continually upgrading their ICT skills and knowledge to integrate ICT into teaching programs and to support students. We have introduced a STEM Champion who is a teacher working with staff to further implement STEM units of work.

6. Student Support Information

Students are supported in a number of ways both within and outside the classroom setting. One avenue is by referral to a Student Learning Committee. This committee meets weekly and includes the Guidance Officer, Support Teachers: Learning and Numeracy, Head of Special Education Services, a Deputy Principal and classroom teachers. This committee will recommend a course of action for the student depending on the areas of concern.

Students can also be referred to our School Chaplain. The Chaplain and Deputy Principal prioritise this support.

6.1 School Chaplain

Our school has a Parents and Citizens' Association endorsed Chaplaincy Program.

There are various models of Chaplaincy services. The model chosen by our community is a mentoring model - providing student mentoring and allowing a Chaplain to be an additional adult role model in our school.

Chaplains may also be involved in activities with religious, spiritual and/or ethical content. Additional written consent will be sought from parents for these activities.

Mrs Michelle Hickin (Chappy Michelle) is a valuable member of our school team. Students and the school community benefit significantly from her skills and this wonderful Federal Government initiative.

6.2 Guidance Officer

A Guidance Officer is based at our school four days a week. The Guidance Officer has an important task to liaise with school staff, parents and visiting health specialists to support students with a disability, significant learning needs or specific health requirements.

It is necessary to contact the class teacher should you wish your child to be seen by the Guidance Officer. Students may be tested by the Guidance Officer after parental permission has been obtained. Following testing, parents will be invited to discuss these results with the Guidance Officer.

6.3 Support Teachers: Literacy and Numeracy

Support teachers are teachers based at the school who work with students and assist classroom teachers in improving literacy and numeracy standards for all students.

Support teachers analyse data and plan programs in response to the needs of students in literacy and numeracy. The administering of programs include whole class, small group and individual settings and involve a number of staff such as classroom teachers, teacher aides and parent volunteers.

Support teachers work collaboratively with classroom teachers, SEP staff, our Guidance Officer, Speech Language Pathologists, the Head of Curriculum and parents to ensure the needs of all students are catered for.

6.4 Special education program

Narangba Special Education Program (SEP) is co-ordinated by our Head of Special Education Services. The SEP supports students with a verified disability through the EAP (Education Adjustment Program). Disabilities include:

- ASD - Autistic Spectrum Disorder
- ID - Intellectual Disability
- VI - Vision Impairment
- HI - Hearing Impairment
- PI - Physical Impairment
- SLI - Speech Language Impairment

The SEP provides an inclusive program and ensures students are supported and able to participate and be successful in all areas of school life. The SEP focuses on the strengths of the students and provides intensive support for their areas of need.

The SEP also supports staff and students in the following ways.

- Managing profiling and reviews to determine levels of support
- Coordinating the EAP (Education Adjustment Program)
- Working with other specialist support staff, teacher aides and AVTs to provide appropriate support to enhance educational outcomes for identified students
- Assisting staff to differentiate and adjust curriculum to ensure engagement in the classroom.
- Formation of Individual Support Plans (ISP) and Individual Curriculum Plans (ICP) where appropriate.

6.5 Speech language pathologist

The Speech Language Pathologist visits the school regularly to support students from P-6. The Speech Language Pathologist supports individuals with difficulties in the areas of language, speech, voice, fluency, oromotor functioning, swallowing difficulties or complex communication needs. The Speech Language Pathologist works as part of the educational team to maximise student's access, participation and achievement of educational goals.

Students with special needs in communication and/or eating and drinking difficulties are identified by the school team and referred to the Speech Language Pathologist through the Student Learning Committee. Students may be supported either directly or indirectly. Availability of direct therapy will depend on the prioritisation process. Speech Language Pathology intervention may be in the form of:

- Individual or group therapy
- Class programs
- Teacher Aide programs
- Home programs

Your child may also be tested by the Speech Language Pathologist to gather information in relation to their development and determine the most appropriate type of support required to meet the student's needs. Written consent will be sought from parents prior to being seen by the Speech Language Pathologist.

7. Policy and procedures

7.1 Absenteeism

Regular attendance is compulsory under the Education (General Provisions) Act 2006, and necessary if your child is to gain the greatest benefit from his/her education.

The school is required to record explanations for non-attendance and therefore monitors student attendance and reasons for absence. If your child is absent from school, please phone the student absence line on 3491 1360 or contact the school by email admin@narangbass.eq.edu.au on the day of the absence. It is important to indicate your child's name, reason for absence and anticipated duration of absence. Word of mouth from a sibling is not acceptable.

If your child is to be away for a length of time, please contact the teacher beforehand. An exemption from compulsory schooling is compulsory when a student cannot attend school for a period of more than 10 consecutive school days. Situations where exemptions may apply include but are not limited to illness, family reasons and cultural or religious reasons. Please make an appointment with the principal if you require more information.

7.2 Behaviour of students

At Narangba State School we strive to ensure that all students are happy and safe at school. Our Responsible Behaviour Plan for Students is based on rights, responsibilities, rules and consequences. Every student in our school has the right to:

- Engage and learn without disruption
- Be treated fairly and courteously
- Work in a clean safe environment where people and property are respected.

All students, staff and community members are responsible for their behaviour and are expected to strive to make choices that align with the school values which protect the rights of others.

To support the school values, the following rules are a minimum expectation for students:

Be safe

Be respectful

Be an active learner

We encourage you to discuss these with your child whenever the opportunity presents itself.

A Responsible Behaviour Plan for Students, based on Education Queensland's Code of School Behaviour is available from the office. Alternatively, a copy can be downloaded from the school's website.

7.3 Book packs

Book pack information will be available at the end of Term 3, giving plenty of time for organisation for the following year. Parents are invited to access this facility but may also wish to purchase their requirements privately, in which case a list will be provided upon request.

7.4 Complaints procedure

Complaints come to the principal and other school staff in many forms. Complaints can be from parents/carers, community, staff or students. In the first instance, please speak to your child's teacher about your concerns to obtain their point of view. On most occasions, misunderstandings can be resolved at this level. If you are not satisfied with the outcome of discussions with your child's teacher, please make an appointment to discuss your concerns with the principal or a deputy principal.

7.5 Change of details

Please contact the school office if you have changed your address, email address, telephone number and/or emergency contacts. This is very important to ensure that our records are current and that parents are easily contacted if required or in the case of an emergency/illness.

7.6 Emergency contacts

It is essential that parents ensure that nominated emergency contact people and numbers are current and available. To ensure the well-being of all students, please do not send your child to school when they are ill.

7.7 Food and allergies

There are a number of students attending our school who have been diagnosed with a severe allergy to nuts and eggs. This means that they cannot consume or come into contact with these products. Our school is supporting these students by implementing some very basic procedures such as not sharing food, disposing of food wrappings appropriately and washing hands after eating. We ask for the support of all members of our school community to make the school a safe place for these students.

Please ensure any food containers sent to school can be opened by your child. It is preferable not to have tin cans at school as students may injure themselves when opening.

7.7 Leaving the grounds early

Should your child need to be collected from school before 3:00 pm, please provide written permission and sign them out at the office. This is expected to be an unusual rather than a regular occurrence.

7.8 Lost property

All property belonging to a student should be clearly marked whether a piece of school equipment or an article of clothing.

All unclaimed property is kept in the SEP courtyard so that students and their parents may search for missing items. Three or four times each year unclaimed property is given to a charitable organisation.

Students are requested to leave valuable items and toys at home. The school does not accept responsibility for loss or damage to these items.

7.9 Medication - A reminder to parents/carers to notify the school about your child's health

Narangba State School is committed to supporting students' health and wellbeing. We would appreciate parents/carers providing the school with any relevant health information that is required to support the student at school. This information is also collected at enrolment but needs to be updated regularly, or if a new health condition develops.

Information about medically diagnosed conditions such as allergies, asthma, diabetes and epilepsy and other health conditions that may require school staff to provide support to students, including administering medication and performing health procedures, should be provided to the school. Additionally, any health need that may impact on school activities such as sports, outings (including camps) should also be discussed with the school.

Information should be provided in writing through appropriate departmental forms available at the office, and any specific health plans (only to be completed and signed by the medical practitioner) should be included. Please contact the school to discuss any specific requirements.

All information is kept confidential and only disclosed to appropriate staff to support your child.

7.10 Mobile phones

Students are **not** permitted to have mobile phones during the school day. Phones are to be left at the office during the school day. The school accepts no responsibility for mobile phones not held in the office.

7.11 Money collection

An official school envelope will be provided to assist with money collection. The school has EFTPOS and credit card facilities available every day at the school office. Money can be sent to school for payments any day of the week.

If you would like to start a savings plan or would like to pay ahead of time you can do this by depositing funds (EFT transfer) into the school bank account using the following details: BSB 064-164 and account number 00090063. Remember to include your child's name as a reference and call 07 3491 1333 or email admin@narangbass.eq.edu.au to inform office staff that you have transferred funds.

7.12 Newsletter

To keep parents informed of school activities and changes to procedures, an electronic newsletter is published fortnightly. Subscription to the enewsletter is arranged by school staff on enrolment. If you change your email address or do not receive the enewsletter, go to:

<http://mailouts.austnews.com.au/subscription/N/narangba-ss-signup.html>

7.13 Parades

Whole school parades are held on a Monday morning at 9:00 am. Also at 2:30 pm on Thursday afternoons with Prep – Year 3 (junior) students one week and Years 4 – 6

(senior) students the next week. Monday morning is around the focus for the week. Thursday parade is a celebration of the great work students have completed for the fortnight. Parents are encouraged to attend the parades.

7.14 Parent teacher interviews

Formal parent teacher interviews are offered twice yearly to maximise the opportunity to use parent-teacher partnerships to enhance student learning. In addition to these interviews parents should feel free to make appointments with classroom teachers to discuss the progress of their children at other times as required. Report cards are distributed at the end of each semester.

Informal parent teacher discussions are an important part of home-school communication. Please arrange a mutually convenient time with the class teacher for longer interviews.

We ask that if you are visiting classrooms before school that you leave promptly at 8:50 am so that teachers can give their full attention to student learning.

7.15 School captains

School Captains, House Captains as well as Band and Choir Captains are elected by Year 4 and 5 students in Term 4 for the following year. Student Leadership is a valued opportunity for both students and school administration. This program allows students to demonstrate responsibility and develop initiative. It is a safe and supportive culture in which to nurture student growth of leadership skills. The student leadership team represents the school at formal functions, co-ordinates the student council and provides a voice for the students.

7.16 Sports houses

Narangba State School has three sport houses - Border, Wickham and Bradman. On enrolment, each student is placed in to a house, with family members being placed in the same house. During the year certain events e.g. sports carnivals are organized for house competitions. House colours are:

BORDER – Red

WICKHAM – Blue

BRADMAN – Green

7.17 Student council

One student from each Years 4 – 6 class is selected as a Student Councillor. These students meet regularly to make student suggestions for school improvement.

7.18 Sun safety

The policy at this school is 'no hat, no play'. A broad-brimmed bottle green school hat is required for every student. Prep students have a yellow broad-brimmed hat. The school also provides sunscreen for outdoor activities. Please inform the office if your child has allergies we should be aware of.

7.19 Transfer certificates

A school transfer certificate is required when a student is transferred from one State School to another. Please contact the school if you are leaving our school.

7.20 Uniform

The school has a well-supported uniform policy. All students are expected to wear the uniform. This expectation reflects a sense of community and belonging and the pride our students have in their school. In terms of health and safety requirements the uniform ensures our students are easily recognisable and dressed appropriately for school activities. Please see our Dress Code for further details.

8. Parent and community involvement

A cooperative partnership between the school, the home and the community supports a quality learning environment. Parents and other interested citizens are encouraged to participate in activities organised by the school and to contribute their skills and knowledge. The school supports community activities and approaches individuals, business people and organisations for assistance.

8.1 Banking

All students (P-6) have the opportunity to open a Commonwealth Bank account. Please contact the office staff for an information pack. Volunteer parents perform banking transactions.

8.2 Outside school hours care

An outside provider offers quality, onsite before and after school as well as vacation care programs for students in Prep to Year 6. Details can be obtained by contacting the co-ordinator.

8.3 Parental responsibilities

An electronic newsletter can be accessed via email on a fortnightly basis. Please take the time to update your calendar and keep informed about school activities. Parents are asked to ensure that children attend school as required by the Education Act. If children are to be collected during school time, please make arrangements through the school office, and be sure to sign your child out. Late arrival at school is very disruptive and some explanation from a parent is expected when signing children in at the office upon arrival at school.

The QSchools app is a convenient way to receive up-to-the-minute information from and about schools. The app is designed to integrate with school websites, and allows users to see when news, events and newsletters are posted to their selected school website. The school community can also receive push notifications and emergency announcements such as natural disasters and school closures through the app.
narangbass.eq.edu.au/calendar-and-news/news/qschools-app

8.4 Parent volunteers

Class teachers appreciate your support and may organise rosters for volunteers according to student and program needs.

Our Support Teachers offer programs for parents several times a year. Please see the relevant teachers if you would like to be involved. We ask that you keep in mind the importance of confidentiality when helping at the school.

8.5 Partnership is essential

Today, it is generally accepted that when parents express confidence in the school and are involved with it in some way, their children are likely to be happier and perform better in the classroom. This may well be due simply to the lessening of distance between home and school. Young children see their parents and teachers sharing common beliefs, attitudes and goals. They therefore feel more secure and more purposeful.

Narangba School tries to maintain very close links with parents. Once forged, these links have been found to result in:

- Greater understanding and support by parents of their children's needs
- More effective teaching and learning within the classroom as teachers are able to acknowledge individual needs
- Improved student outcomes in literacy and numeracy
- Better communication between home and school
- More confident and independent students
- Mutual esteem and support between parents and teachers

We acknowledge the trust you place in us to provide educational and social opportunities which stimulate and enrich your child's development. We encourage you to be an active participant in this partnership.

8.6 Parents & citizens association

The Parents and Citizens Association provides a valuable community link with the school and staff. P&C members provide input into decision making about a range of school matters. P&C fundraising supplements the school budget to provide enhanced services and resources for our students. We look forward to welcoming new members.

Membership of the P&C is by completion of a membership registration form available at meetings. Applications are accepted at any P&C meeting or the Annual General Meeting and must be renewed annually. Membership is open to all parents and interested persons from the community. The P&C meets on the second Monday of each month at 7:00 pm in the resource room at the school except during school holidays.

8.7 School watch

We are very proud and protective of our school and its community. Parents are asked to work with us and report any incidents where school facilities are under threat or when the safety and well-being of the children are at risk.

8.8 Tuckshop

In accordance with Education Queensland's Healthy Schools Guidelines, the Tuckshop Committee strives to provide a wide variety of nutritious foods and drinks at the lowest possible prices. The tuckshop can only function with the help of enthusiastic volunteers and the convenor welcomes new parents.

The tuckshop operates every day of the week using two ordering systems; the easiest way is through www.ouronlinecanteen.com.au and the other way is by using a paper bag at the Tuckshop. Parents can write the order on a paper bag (correct money is preferred). Students in Years 4-6 place their orders in the box provided outside the

tuckshop by 9:00 am and students in P-3 place their orders in the tub in their classroom. All orders will be delivered to classrooms at first break.

A basic lunch can be provided for students who forget their lunch. An account is sent home to be paid the next school day.

8.9 Uniform shop hours

The P&C provides a uniform shop service on the school grounds. All items except shoes can be obtained from the school Uniform Shop.

Monday 8:00 am to 10:30 am

Wednesday 2:00 pm to 4:00 pm

9. The Narangba school song

Onward and upward, our heads held high,
As we strive to learn, as the years go by,
For life we learn, our motto, our guide,
Narangba, our school, we uphold with pride
With pride, with pride,
Narangba, our school, we uphold with pride,
Narangba, our school, we uphold with pride.

The shaping of our future, on this we build,
To treasure what we learn, our lives fulfilled
Understanding the commitment, we will abide
Narangba, our school, we uphold with pride
With pride, with pride,
Narangba, our school, we uphold with pride,
Narangba, our school, we uphold with pride.

Our hopes, our dreams, our thoughts remain,
With belief in ourselves, success is our aim,
Decisions on our future, we will provide,
Narangba, our school, we uphold with pride
With pride, with pride,
Narangba, our school, we uphold with pride,
Narangba, our school, we uphold with pride.



At Narangba State School, we offer...

Students

- Education from Prep to Year 6
- An expectation for students to be responsible, well-mannered and well presented
- Fair, consistent and effective behaviour management
- Support to students with Special Needs within the curriculum with a Student Learning team
- A School Chaplain who works with the Guidance Officer and Student Learning team to support students
- The reality that teachers send their children to our school

Learning and Teaching

- High learning expectations and standards
- A very successful reading program, the core of which is the phonological awareness program, 'Sounds to Letters'.
- Opportunities for students to attain significant achievements in national and state-wide academic testing and competitions
- Competent, acknowledged, experienced and enthusiastic staff
- Extensive literacy and numeracy support where students in Years P-6 are grouped by abilities several times a week.
- Specialist Teachers in:
 - Classroom Music
 - Physical Education
 - Japanese
 - Instrumental Music
- Strong commitment to:
 - Literacy and Numeracy
 - Science
 - STEM
 - Special Education
 - Health and Physical Education
 - The Arts
 - Technology
 - Social-Emotional Learning
 - Environmental Sustainability

Our Environment and Facilities

- A warm, caring and friendly environment
- Formal and informal learning spaces with play areas, in a bush setting
- Interactive whiteboards in all teaching spaces
- A variety of classroom designs from traditional to flexible learning spaces
- Large play areas, three adventure playgrounds and two ovals
- A well-resourced Resource Centre
- A Multi-Purpose Hall
- Two Internet capable computer labs

Sports

- AFL
- Basketball
- Cricket
- Cross Country
- Swimming
- Netball
- Soccer
- Track and Field
- Touch Football
- Volleyball

Extra-Curricular Activities

- Choirs
- Instrumental Music

COMMUNITY ENGAGEMENT OPPORTUNITIES

- Outside School Hours Care
- Vacation Care
- Local Chaplaincy Committee
- Private Tennis classes
- Auskick (AFL)
- Dance – Moreton Bay Physie